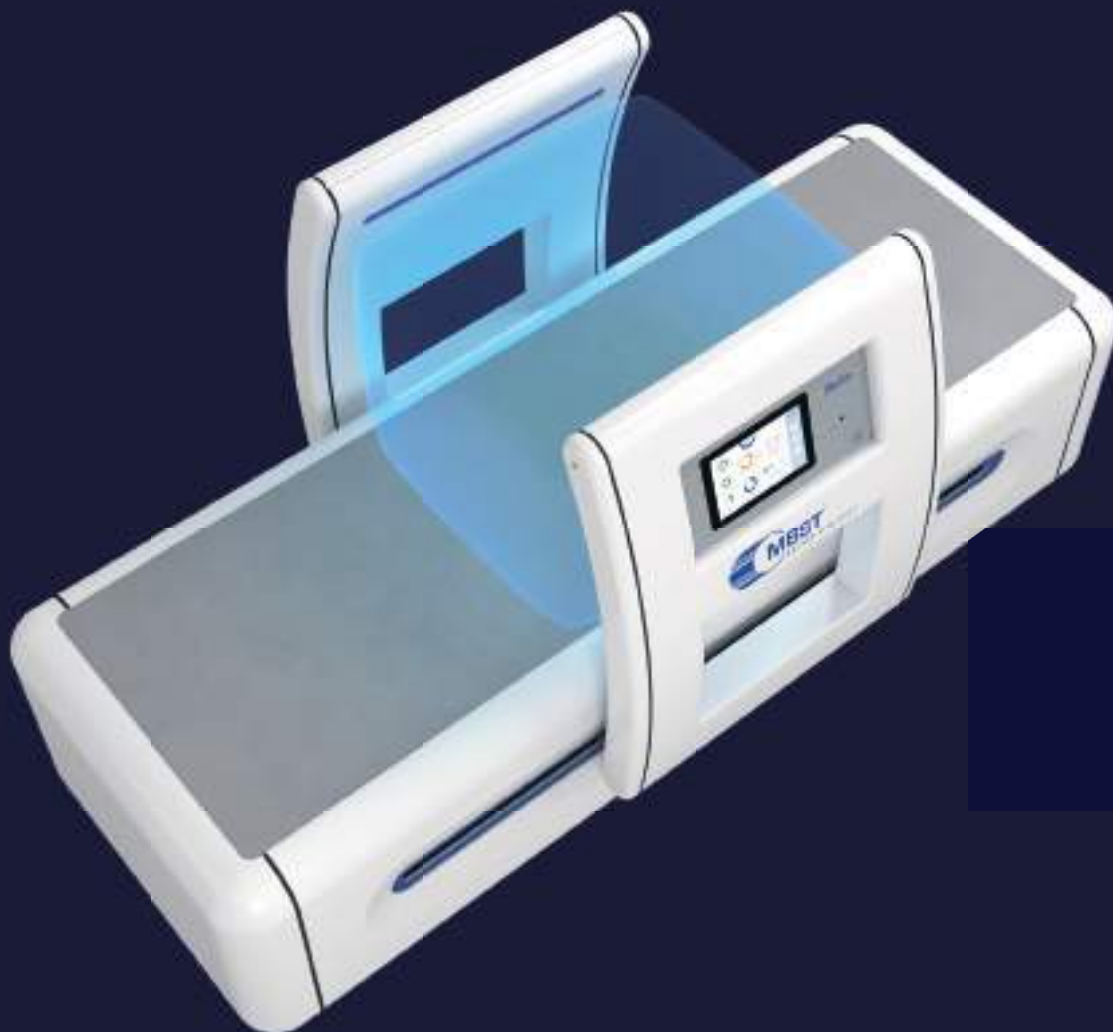


Small floor space required due to compact design,
only as much as a common treatment couch

ARTHRO·SPIN·FLEX 2



Treatment zones:

Freely selectable,
construction-related especially suitable for the treatment of
thighs, hip, back, spine, torso and shoulders

Magnetic resonance field volume approx. 180 l

Recommended floor space: length × width = 3000 × 2000 mm
Minimum floor space: length × width = 2200 × 1200 mm

Medical technological treatment system – Class 2A

Active medical device

Open applicators with switchable lighting

Control unit (IEC protection class I) with switching power supply

Sweep coils (static and variable field)

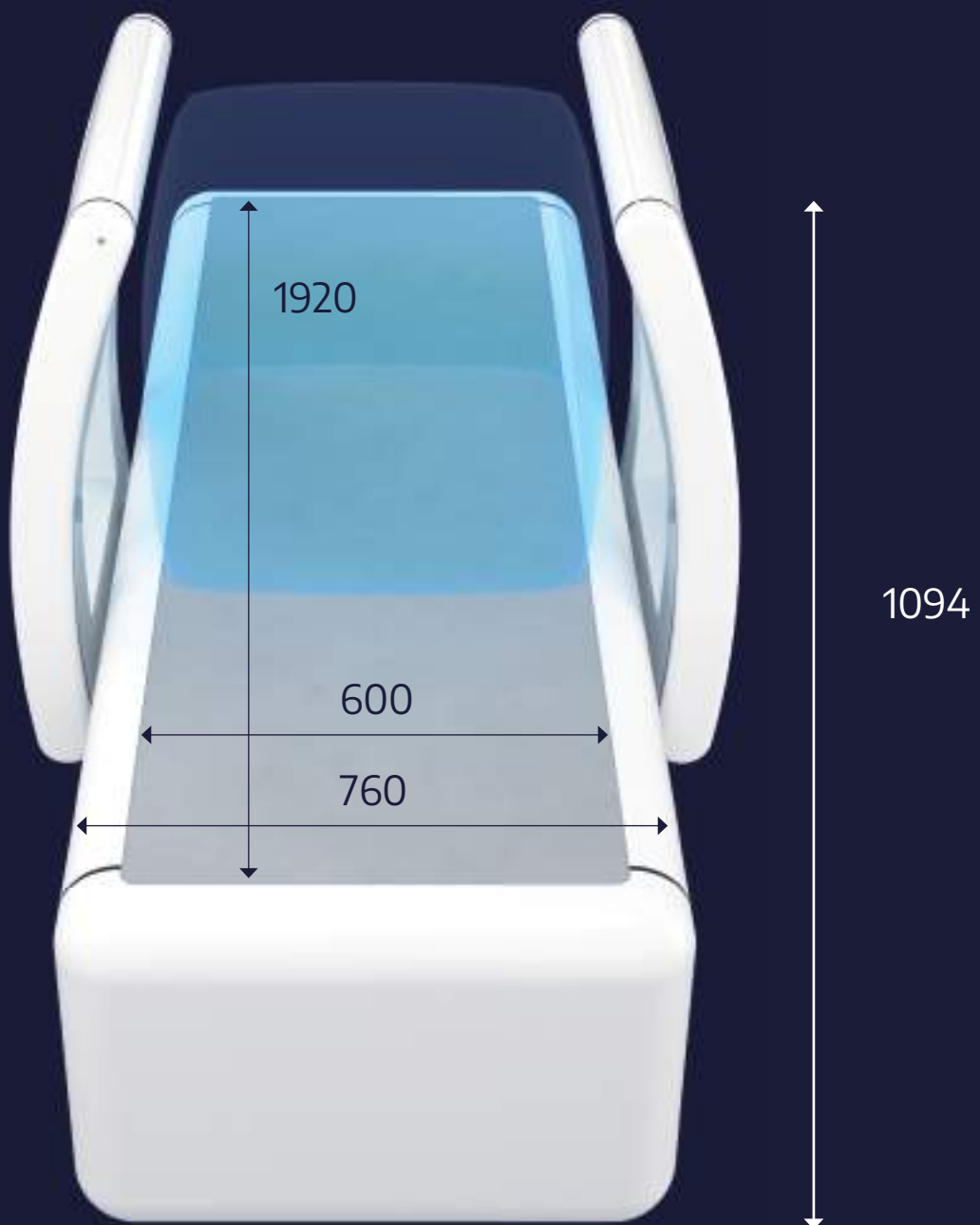
Radio frequency coil (RF field with 14 – 17.5 kHz)

AFP effective magnetic field: $B_0 = 0.33 - 0.40 \text{ mT}$

Magnetic resonance field volume: approx. 180 l

Total system weight: approx. 140 kg

Max. patient weight: 180 kg



All dimensions in mm

DUAL · MR · SYSTEM

Optimised magnetic resonance applicators with a homogeneous active treatment field

FLEXSLIDE · ERGONOMIC · POSITIONING

Smooth-running applicators slide easily to facilitate patient access and optimal positioning

INTUO · TOUCH · INTERFACE

Intuitively operable touchscreen with One-Finger-Touch operating concept

LOW FIELD · MR · CONTROL

Optimised magnetic resonance control device with Adiabatic Fast Passage regulator and feedback loop control

EVOCONTOUR · EASY · CLEAN

Surface is resistant to impacts, scratches and abrasions, easy to clean and to disinfect

HIGHCOMFORT · BASIS

Perfect lying comfort and pleasant surface feel



ARTHRO·SPIN·FLEX 2